

# *Advanced Device Locks for UIQ Version 1.01*

## *USER MANUAL*

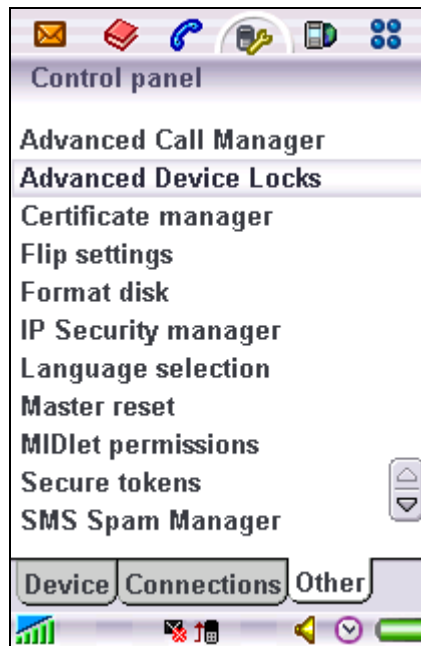
The information contained in this guide is correct as of the time of its publishing (January 2006). WebGate reserves the right to make changes to the user guide and services described therein.

## TABLE OF CONTENT

Configuring "Advanced Device Locks" .....	3
Protected Applications.....	5
FAQ.....	6



## Configuring "Advanced Device Locks"



Screenshot #1

With **Advanced Device Locks** you can secure the important information and personal data you have in your phone by locking it. You can lock the device with a secure code up to 7 characters long. **Advanced Device Locks** is a **Control panel** plug-in application. Therefore you can find and access it from the "Other" page of your **Control panel** (Screenshot #1).



Screenshot #2

"Locks" page (Screenshot #2) gives you the following options:

### At power on

- **Always**  
Every time you turn on the device, it asks you for a lock code.
- **When SIM Changed**  
Turns on the lock if you have changed SIM card.

### Automatic lock

Select to turn on the automatic lock. The device lock turns on after the specified period of inactivity in minutes.

### Protected applications

Select to turn on the protected applications lock. The device lock turns on when you or someone else tries to access the specified "protected applications". More details about the protected application can be found on the next page.



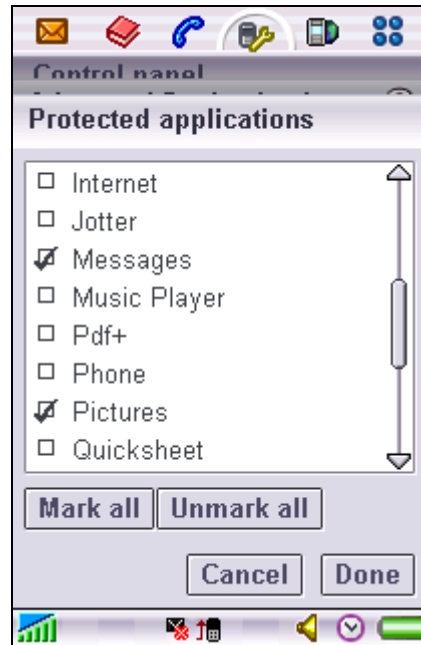
Screenshot #3

In "**Code**" page (Screenshot #3) you can change the secure code, which can be up to 7 characters long. The default secure code is **0000**. To change the existing code, follow the steps as shown on the screen:

1. **Enter old code**
2. **Enter new code**
3. **Confirm new code**
4. Click on the **Change code** button to apply the new code

In "**About**" page you can see short information about the product and the author.

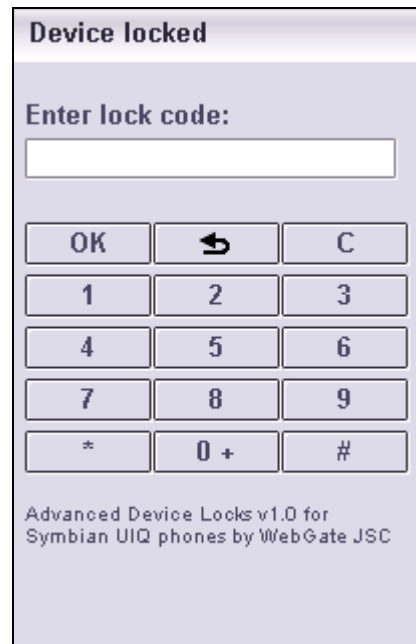
## Protected Applications



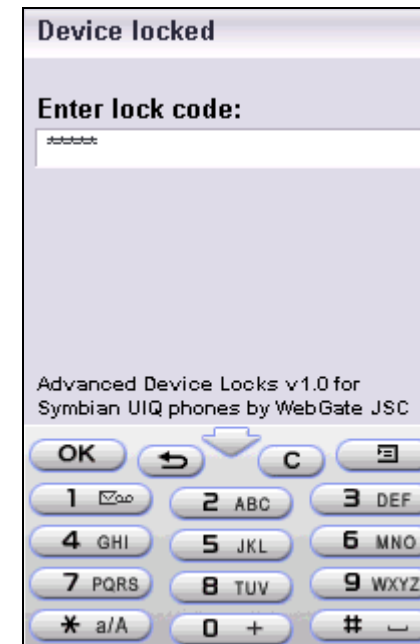
Screenshot #4

Click on the **Edit protected applications** button on the “Locks” page (Screenshot #2) to select the application/s you want to protect. The device lock turns on when you or someone else tries to access the specified “protected applications”.

When your device is locked and the flip is open you will see the dialog on Screenshot #5. If the flip is closed you will see the dialog on Screenshot #6. If your device is locked because of protected application you can go back to the main menu of your phone by clicking on the ↶ button. If your device is locked at power on or because of inactivity then clicking on the ↶ button will simply clear the **lock code** field and the dialog will persist on the screen.



Screenshot #5



Screenshot #6

## FAQ

**Q1: The application cannot be installed on the removable media (memory card). Why is that?**

A1: Allowing the application to install on removable drives leads to secure problems. While the application's purpose is to lock personal data, removing the installation drive causes the device unlocking.

**Q2: Can an unauthorized person uninstall the application and get an access to the protected content?**

A2: Yes. That is why we recommend you to make the "Installer" protected application. By this way if somebody tries to install/uninstall something on your phone he/she will be asked for the lock code.

**Q3: I can not find Advanced Device Locks in my application list. Where is it?**

A3: Advanced Device Locks is a Control panel plug-in application. Therefore you can find and access it from the "Other" page of your Control panel.

**Q4: On the first use the Advanced Device Locks asks me for a lock code. Which code should I use?**

A4: The default code is 0000. It is strongly recommended to change this code upon the first use of the product.

**Q5: I am a Motorola UIQ phone user. Why can't I see "When SIM Changed" option?**

A5: There is a bug in the Motorola UIQ phones firmware, due to which this option does not work.

**Q6: How can I restrict the PC connection to the phone?**

A6: For *Sony Ericsson UIQ phones*: Go to "Control panel" -> "Connections" -> "Cable" and select "Cable status" to "Modem". Go to "Control panel" -> "Other" -> "Advanced device locks" -> "Edit protected applications" and select "Control panel". In this way if you want to connect your phone to a PC, you have to change your "Cable status" to "PC Connect". Therefore you have to enter the lock code while you are accessing the control panel.

*For Motorola UIQ phones*: Go to "Control panel" -> "Other" -> "Advanced device locks" -> "Edit protected applications" and select "Desktop suite". In this way if you want to connect your phone to a PC you have to enter the lock code while you are accessing "Desktop suite".