

MotoKit for Motorola A925/1000

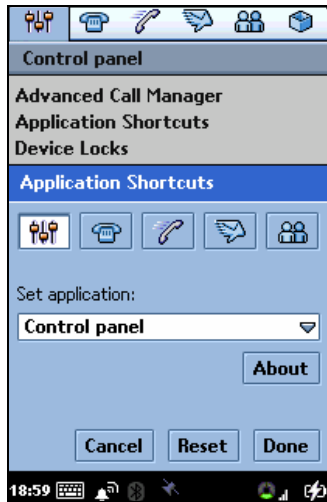
Version 1.01

USER MANUAL

The information contained in this guide is correct as of the time of its publishing (September 2005). WebGate reserves the right to make changes to the user guide and services described therein. Motorola is a trademark of Motorola, Inc.

TABLE OF CONTENT

MotoKit for Motorola A925/A1000	3
I. Application Shortcuts	4
II. Device Locks	5
III. Speed Dial	6



Screenshot #1

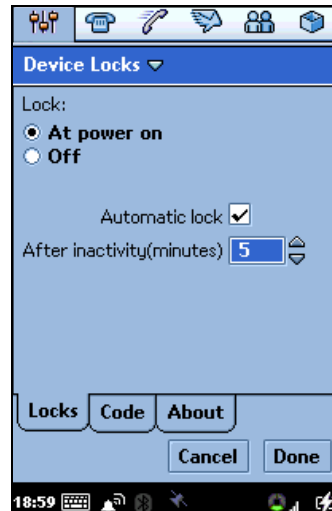
MotoKit for Motorola A925/A1000

MotoKit contains the following 3 applications:

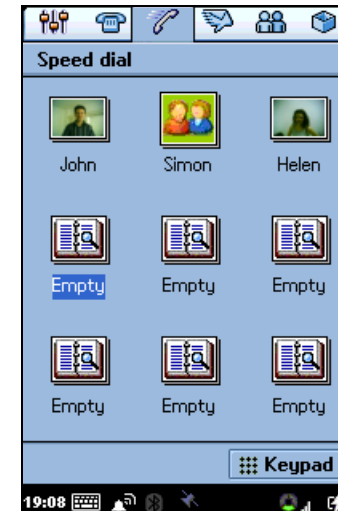
- I. **Application Shortcuts**
- II. **Device Locks**
- III. **Speed Dial**

With these 3 applications you can easily customize your phone according to your personal needs, secure the important information and personal data you have in your phone and have immediate access to selected phonebook contacts.

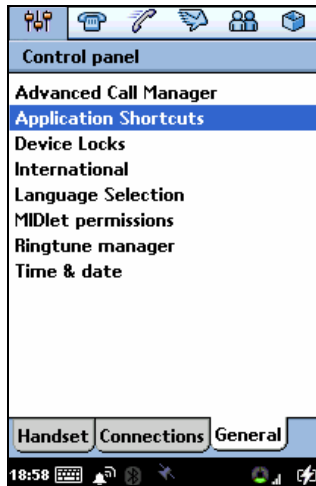
Application Shortcuts (Screenshot #1) and **Device Locks** (Screenshots#2) can be easily accessed from the Control Panel. **Speed Dial** (Screenshot #3) can be accessed from the Applications list. The functionality of each application is explained in more details below.



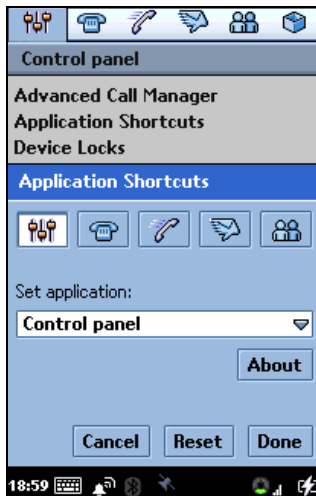
Screenshot #2



Screenshot #3



Screenshot #4



Screenshot #5

I. Application Shortcuts

With **Application Shortcuts** you can change easily and quickly the shortcuts of the applications displayed on the top line of the phone screen (a.k.a. Application Picker). You can arrange the shortcuts according to your personal needs and preferences.

Application shortcuts can be accessed from the Control Panel (Screenshot #4).

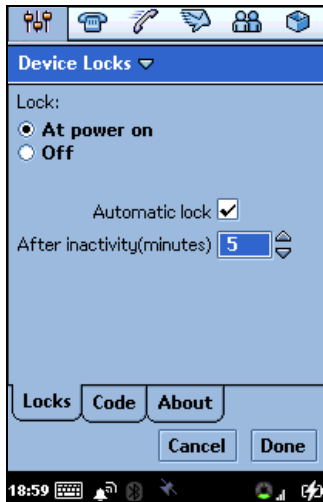
To change the current application shortcuts viewed on the top line, follow the steps below (Screenshot #5):

1. Go to the **Control Panel** and *Select "Application Shortcuts"*
2. Select the shortcut of the applications you want to change
3. Select an application from "**Set application**" choice list and confirm your choice with "**Done**".

There are no limits for the numbers or any other restrictions for changing, arranging and rearranging the shortcuts of the applications. In case you decide to keep the default Motorola configuration of the shortcuts simply select "**Reset**".

The following options are available in Application Shortcuts dialog as well (Screenshot #5):

- "**About**" – shows short information about the product and the author
- "**Cancel**" – discards all changes that have been made
- "**Reset**" – restores the shortcuts to the default Motorola configuration
- "**Done**" – applies all changes that have been made



Screenshot #6



Screenshot #7

II. Device Locks

With **Device Locks** application you can secure the important information and personal data you have in your phone by locking it. With this application the information in the phone will be protected even if the phone is stolen. You can lock the device with a secure code up to 7 characters long. Device Locks can be accessed from the Control panel.

The following menus are available in the Device Locks screen (Screenshot #6):

“**Locks**” page gives you the following options:

- “**At power on**” – if this option is selected “**Device locked**” dialog will be displayed when the phone is switched on (Screenshot #8).
- “**Off**” – if this option is selected, there will be no lock when the phone is switched on (default)
- “**Automatic lock**” and “**After inactivity (minutes)**” – if the box “Automatic lock” is checked the phone will be locked after specified user inactivity time interval. Inactivity means no interaction with the device (keys and/or screen touches).

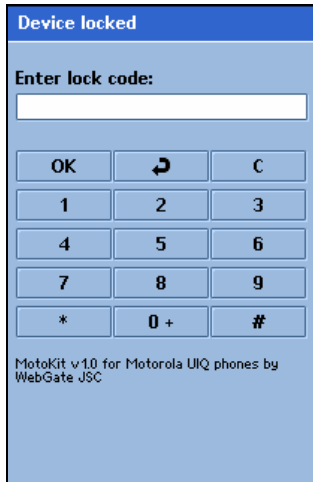
In “**Code**” page you can change the secure code, which can be up to 7 characters long. The default secure code is 12345. To change the existing code, follow the steps as shown on the dialog on Screenshot #7:

1. **Enter old code**
2. **Enter new code**
3. **Confirm new code**
4. Select **Change code** button to apply the new code

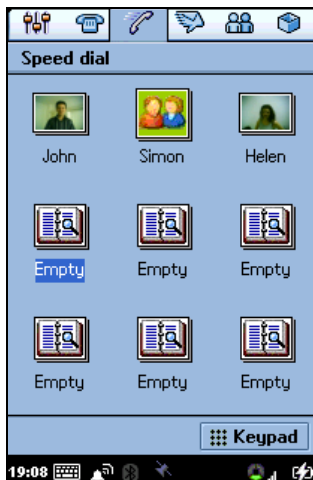
In “**About**” page you can see short information about the product and the author.

Two more options are available on the Device Locks dialog shown on Screenshot #7:

- “**Cancel**” – discards all changes that have been made
- “**Done**” – applies all changes and requests a security code for confirmation



Screenshot #8



Screenshot #9

“Device locked” screen is displayed on the phone when the device is locked (Screenshot #8).

III. Speed Dial

Speed Dial application gives you immediate access to 9 important for you contacts. These contacts are viewed as 9 cells as shown on the dialog on Screenshot #9. The cells are displayed with the corresponding name and photograph if available (Screenshot #9 – John). If a photograph is not available the default picture will be displayed (Screenshot #9 – Simon). If the cell is empty the default icon “Empty” will be displayed.

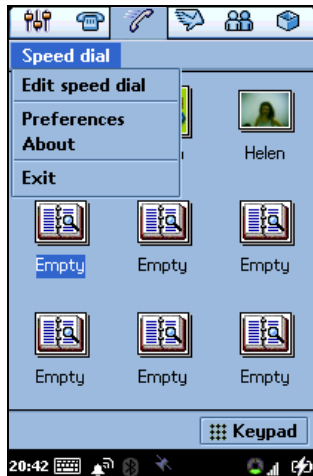
- **To define a speed dial contact** select an empty icon and enter the name of the person or a number you want to have quick access to. Additionally you can enter a photograph and more details.
- **To call a speed dial contact** simply select the predefined cell and the phone starts dialing the selected contact. If the cell is “Empty” you have to select a contact from your “Contacts list”.

Each cell (with predefined person or number) is linked to the corresponding contact from the default “Contacts list” application.

With “Keypad” button you can switch to the default “Phone” application as shown on the dialog on Screenshot #10. When you are in the default “Phone” application you can easily switch back to the **Speed Dial** application by selecting the speed dial button on the status line (3rd icon from left to right on the dialog shown on Screenshot #10).



Screenshot #10





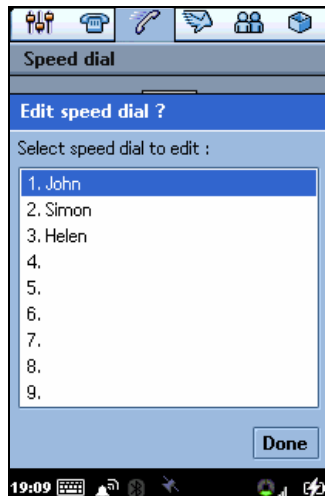
Screenshot #11

In “**Edit speed dial**” menu (Screenshot #11) you can change your speed dial records. By selecting a cell number (Screenshot #12) you can add new speed dial contact or edit an existing record.

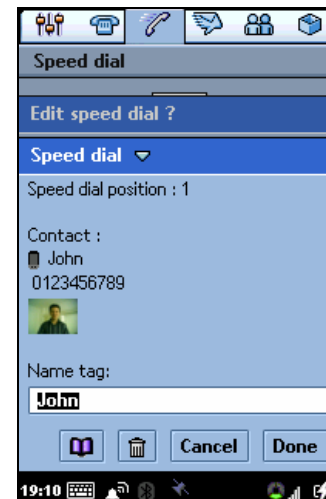
In the field “**Name tag**” (Screenshot #13) you can change the name of the speed dial record. By default it is the same as the name in the corresponding contact in your Contacts list.

In “**Edit speed dial**” dialog shown on Screenshot #13 the following options are available as well:

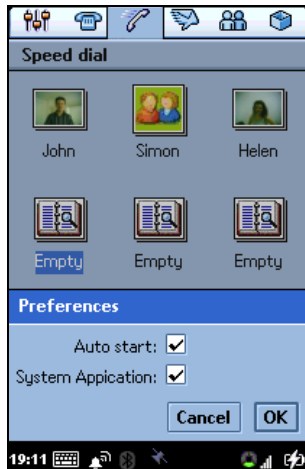
-  - allows you to change the current speed dial record with another contact
-  - deletes the current speed dial record
- Cancel – discards all changes that have been made
- Done – applies all changes that have been made



Screenshot #12



Screenshot #13



Screenshot #14

“Preferences” menu allows you to change the application preferences:

- **“Auto start”** option allows you to activate/deactivate Speed Dial auto run, when the phone is starting. By default this option is **turned “On”**.
- **“System Application”** makes “Speed Dial” a Symbian OS system application. This ensures that the application will not be closed down by the Symbian OS low memory framework or by the backup framework. By default this option is **turned “On”**.

Note: If you attempt to backup your device using PC Suite, it will find the application is locked. To backup Speed Dial, exit before starting a backup.