

SMS Spam Manager
for Nokia 9300/9500 Communicator

Version 1.00

USER MANUAL

The information contained in this guide is correct as of the time of its publishing (May 2006).
WebGate reserves the right to make changes to the user guide and services described therein.
Nokia is a trademark of Nokia Corporation.

TABLE OF CONTENT

| | |
|---------------------------------|----|
| Starting SMS Spam Manager | 3 |
| Main Menu | 4 |
| Preferences | 5 |
| Active Mode | 6 |
| Black list rules | 7 |
| Create/edit rules | 8 |
| Blocked SMS log..... | 10 |

Starting SMS Spam Manager

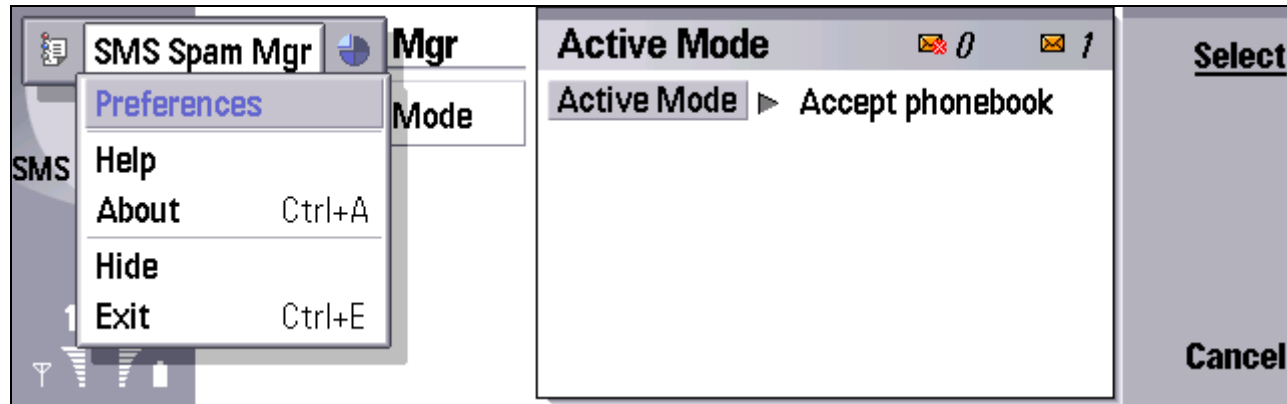


When SMS Spam Manager is active you will see on your Desk application status line (over the signal pane) one of the following indicators depending on your active mode discussed below:



If SMS Spam Manager is not running, you can start it from the applications menu.

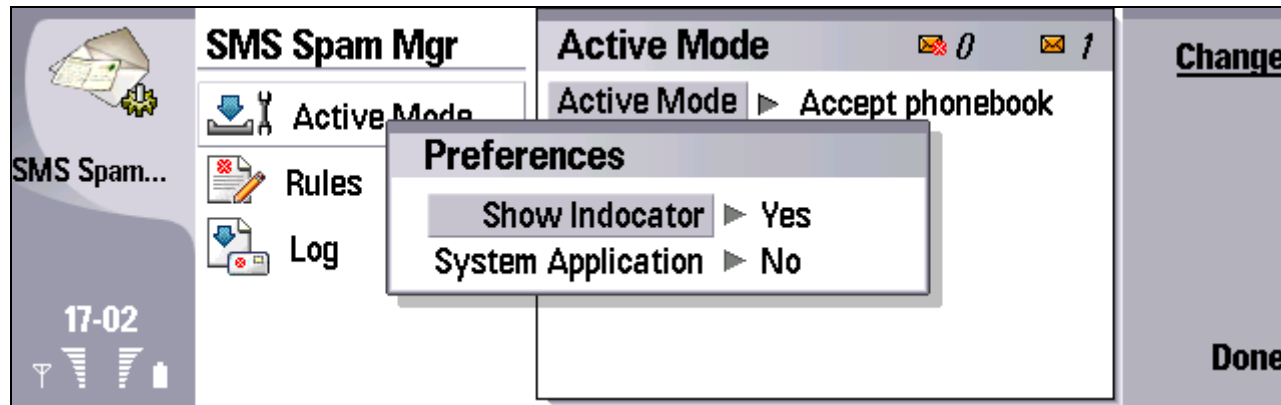
Main Menu



After starting SMS Spam Manager you will enter to the main view, where you can access various settings, which are described below. By pressing “Menu” key on your Communicator keyboard you can select one of the following options:

- **Preferences**
Edit the application options and preferences.
- **Help**
Shows SMS Spam Manager see context-sensitive help.
- **About**
Shows short information about the product and the author.
- **Hide**
Switch the application to the background.
- **Exit**
Exits the application. Use “Hide” option if you want SMS Spam Manager to catch the SMS in the background.

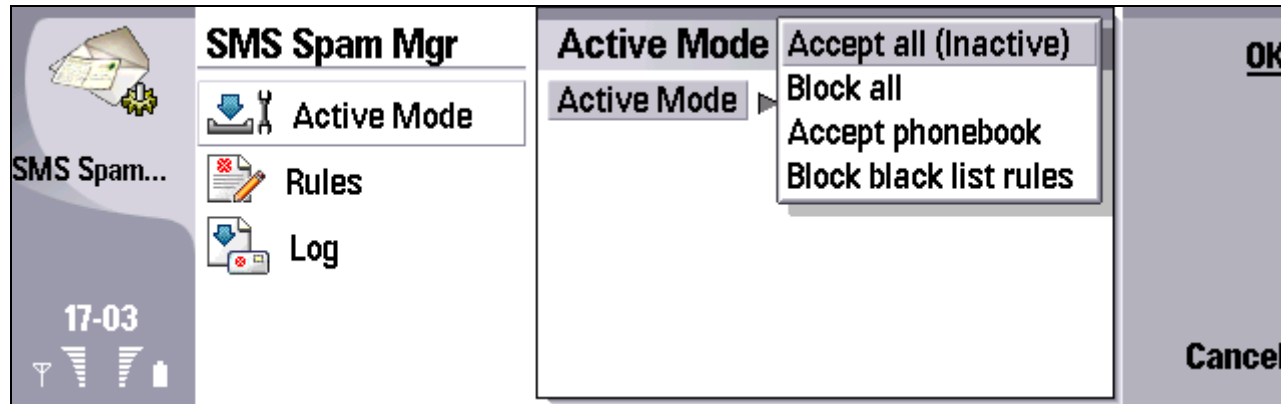
Preferences






- **Show indicator**
This option allows the user to activate/deactivate indicator icon on the status bar. By default this option is turned "On".
- **System application**
Makes SMS Spam Manager a Symbian OS system application. This will ensure that it does not get closed down by the Symbian OS low memory framework or by the backup framework. By default this option is turned "Off".

Note: If you attempt to backup your device using PC Suite, it will find the application is locked. To backup SMS Spam Manager, exit before starting a backup.


Active Mode



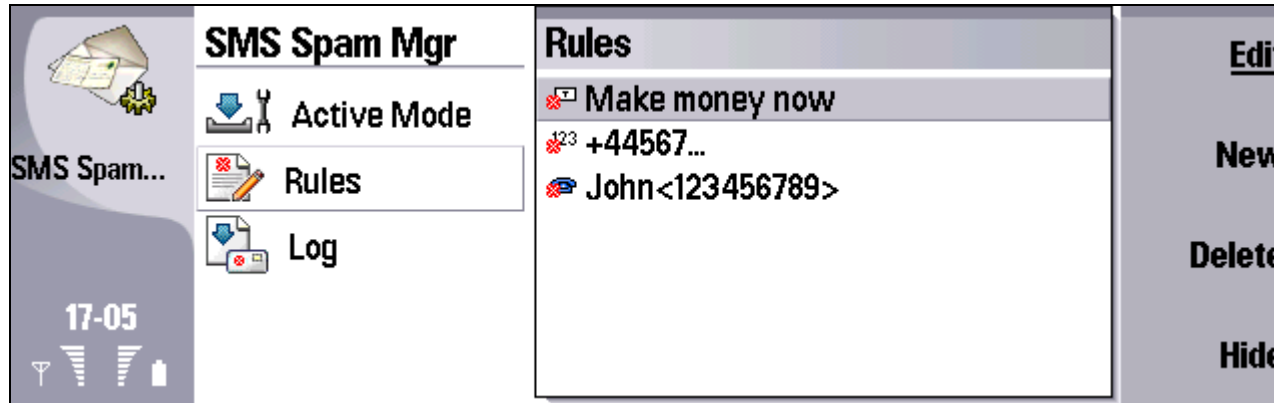
There are 4 active modes:

- **Accept all (Inactive)**
The phone will accept all incoming SMS messages.
- **Block all**
The phone will block all incoming SMS messages. Indicator for this mode is .
- **Accept phonebook only**
The phone will accept incoming SMS messages only from people listed in your phonebook. Indicator for this mode is .
- **Block from black list rules**
The phone will block the incoming SMS messages, which satisfy at least one rule defined on the "Rules" page. Indicator for this mode is .

Above the "Active mode" setting list you can see the number of messages rejected and accepted since SMS Spam Manager has been started. For example, if you have 2 rejected messages and 5 accepted messages you should have the following indication:

 2  5




Black list rules



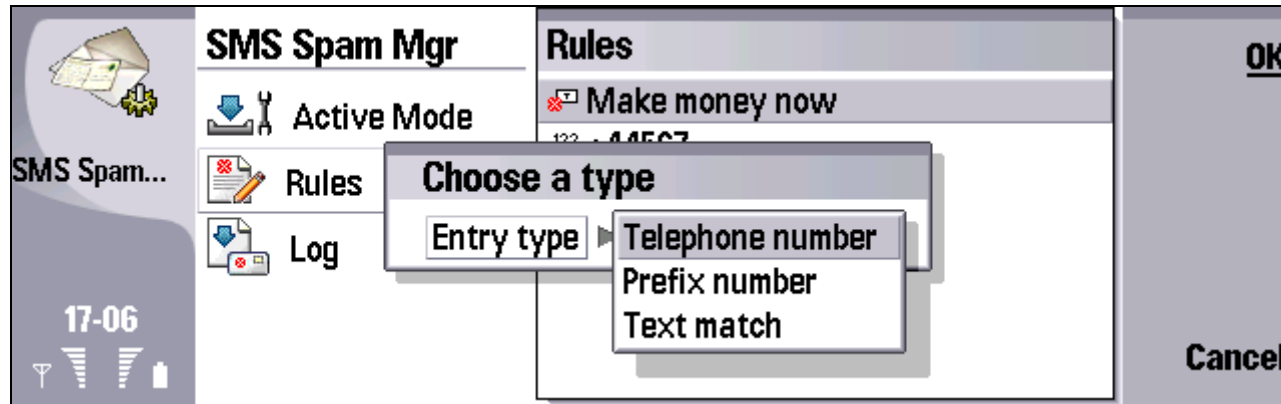
Here you can define your black list rules. These rules will be used, when your active mode is set to "Block from black list rules".

- **New**
Starts the creation of new rule.
- **Edit**
Starts editing the selected rule.
- **Delete**
Deletes the selected rule.

In the listbox you can see your rules:

-  **Telephone number rule**
Messages coming from the defined phone number will be blocked.
-  **Prefix number rule**
Messages coming from a phone number, which starts with the defined prefix will be blocked.
-  **Text match rule**
Messages, which contain the defined phrase will be blocked

Create/edit rules



When creating a new rule the first thing you have to do is to select the rule type. There are 3 rule types

- **Telephone number**
Messages coming from a phone number (defined on the next step) will be blocked.
- **Prefix number**
Messages coming from a phone number, which starts with a prefix (defined on the next step) will be blocked.
- **Text match**
Messages, which contain a phrase (defined on the next step) will be blocked.

Tap "OK" when ready.

Depending of your choice one of the following dialogs will appear on your screen:

Phone number rule

Name ▶ John

Phone Number ▶ 123456789

Telephone number rule

Prefix number rule

Prefix ▶ +44567

Prefix number rule

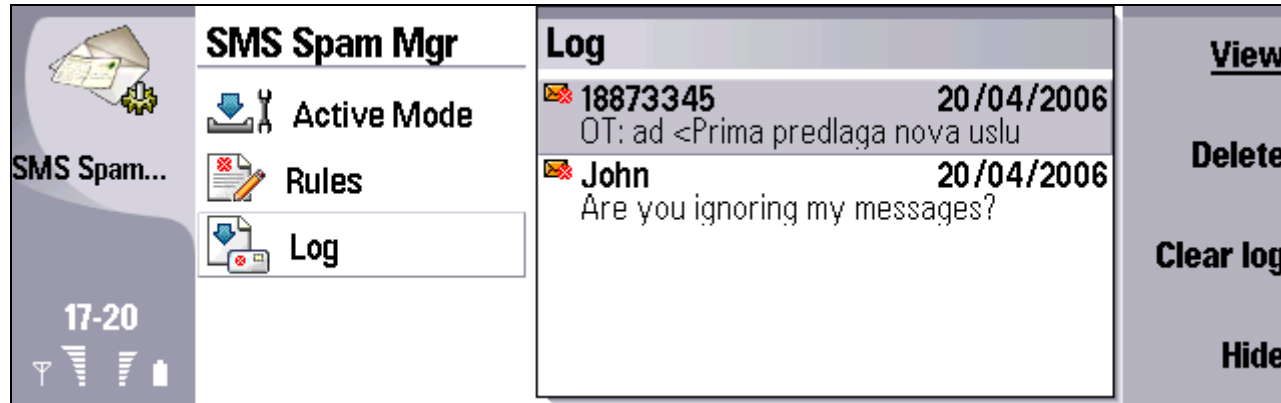
Text match rule

Phrase text ▶ Make money now

Text match rule

- **Phonebook**
Allows you to import data from your Phonebook.
- **Inbox**
Allows you to import data from the last 20 SMS messages in your Inbox.
- **Cancel**
Cancels the operation.
- **Done**
Saves the data.

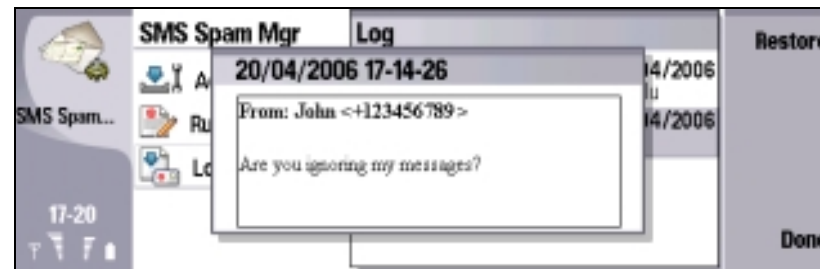
Blocked SMS log



Here you can see all the messages, which are blocked.

- **View**
Allows you to view the selected message. Once opened the message can be restored.
- **Delete**
Deletes the selected message from the log.
- **Clear log**
Deletes the all messages from the log.

Once opened the message can be restored. Here you can see a blocked message.



- **Restore**
Moves the message to your Inbox. The phone will indicate it as a new message.
- **Done**
Closes the dialog.